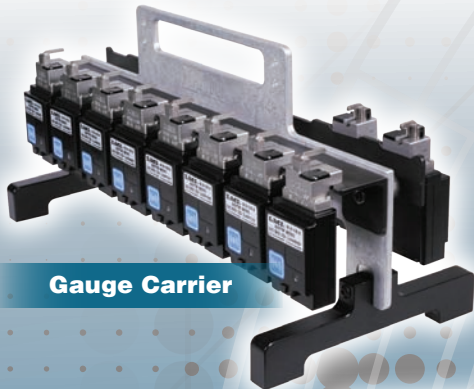


WIRELESS SEAL GAP MEASUREMENT SYSTEMS



Gauge Carrier



4 Port Charger



LMI 2303
Verification Block

Close the Gap with LMI's Wireless Seal Gap System

Gauge Features

- Robust design and construction
- Measurement Travel:
 - 10.0mm and 20.0mm available
- Accuracy:
 - 30 μ m 237W & 238W gauges
 - 60 μ m 237W Ultra Mini & 20.0mm travel gauges
- LED status lights
- Audio transducer for operator feedback
- No external antenna
- Single button operation
- Gauges interface directly into LMI's UGI Seal Gap Software
- Long battery life:
 - 8 hours continuous 100% duty cycle
 - Rechargeable



Measure Deck Lid & Lift Gate Seal Gaps

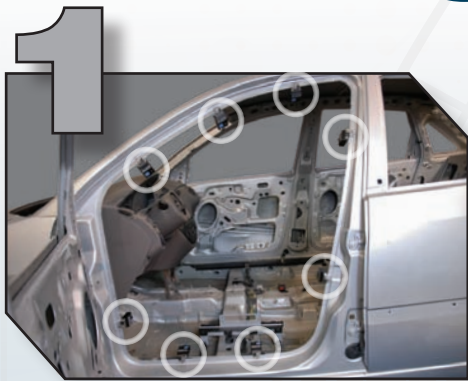


Measure Door Seal Gaps

LMI[®]
Linear Measurement Instruments, Corp



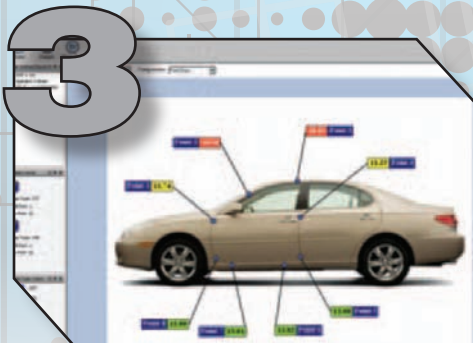
ACCURACY REPEATABILITY DURABILITY SIMPLICITY



STEP ONE
Place gauge on flange



STEP TWO
Close and flush door or deck lid.



STEP THREE
View and sample live readings on a colorful graphics screen to verify part quality

STANDARD GAUGE MODELS Custom Gauges Available



LMI 237W Mini Door Seal Gap Gauge



LMI 238W Mini Deck Lid Seal Gap Gauge



Clamp-On



Magnetic or Clamp-On

LMI 237W Ultra Mini Seal Gap Gauge

Contact LMI for an on-site demonstration and more information on the wireless Seal Gap Measurement System!



LMI
Linear Measurement Instruments, Corp



101 N. Alloy Drive, Fenton, MI 48430 • Phone: 810.714.5811 Fax: 810.714.5711 • Email: sales@lmicorporation.com

WWW.LMICORPORATION.COM