

DROP YOUR INDICATOR!

**A TOUGH BREAK
FOR THE COMPETITION**

**200
SERIES**

**Miniature Probe
Transducers**



LMI[®]

Linear Measurement Instruments, Corp.

200 SERIES

Miniature Probe Transducers

LMI 200 Series Probes will change the way you collect your SPC data.

Clipboards with a paper and pencil are a thing of the past. Not to mention that wasted time and operator error are extremely costly. Digital indicators are not built for the shop floor and do not withstand the daily abuse that they are subjected to. Typically the first time a digital indicator is dropped is the last time it will function. If you currently use indicators, chances are somewhere in the quality department there is a drawer full of broken indicators.

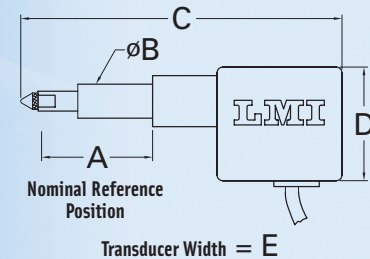
The LMI 200 Series Probes are designed to simplify data collection and built to last in the manufacturing environment.

Simply connect and calibrate the LMI 200 Probe to a data collector or readout and you are ready to go. The LCD readout of the collector is conveniently located in your hand and not on the gauge so it is easy to read. There are no batteries to maintain or buttons to press on the probe to accidentally change the sign or zero point. The robust construction of the LMI 200 Probe is why they are backed by a 1 year warranty. Made from aluminum and hardened tool steel the LMI 200 Probe is built to last.

Durability, all the way to the tip. The weak point of every indicator is the contact tip and when the tip breaks off the threaded shank is left inside the plunger leaving the unit completely useless. Every indicator tip that we manufacture, sell and supply with the LMI 200 Probe is a two piece construction from hardened steel. The threaded portion goes up inside the tip so there is no stress riser at the shoulder of the tip waiting to shear off, as with common indicator tips.

Spring Force =
94 g (3.3 oz) @ nominal position for 10.0 mm travel models
110 g (3.9 oz) @ nominal position for 22.0 mm travel models

Connection: All LMI 200 Series probes include an LMI 6009 4pin-4pin coil cable



Features:

- ▶ Repeatability: Typical Gauge R & R of less than 5%
- ▶ Simplicity: Collect SPC data fast and accurately
- ▶ Durability: Aluminum and tool steel construction house the solid state electronics
- ▶ Designed to withstand IMPACT and SIDE LOAD better than any indicator
- ▶ Smaller than standard indicators allows it to check tighter areas
- ▶ Direct replacement for fragile digital indicator
- ▶ Direct connection to data collectors
- ▶ Zero Maintenance, no batteries or buttons
- ▶ Variety of interchangeable tips available, all with the two-piece durable design that eliminates sheared tips and damaged probes
- ▶ Custom Probes and modifications are available to fit your application
- ▶ 1 year warranty with direct manufacturer service and support

Specifications:

- ▶ Accuracy: 30µm
- ▶ 10.0 mm and 22.0mm measurement travel
- ▶ Design to fit nominals of 31.0, 50.0 and 54.0 mm
- ▶ Fits standard 3/8" bushing

Model	Travel	A Nominal	B Diameter	C	D	E	Tip Style
LMI 200-S	10.0/.39	31.0/1.22	9.52/.375	90/3.54	31.8/1.25	14.3/.56	Solid Point
LMI 200-SB-31	10.0/.39	31.0/1.22	9.52/.375	90/3.54	31.8/1.25	14.3/.56	Point & Flat included
LMI 200-SB-50	10.0/.39	50.0/1.97	9.52/.375	109/4.29	31.8/1.25	14.3/.56	Point & Flat included
LMI 200-SF-31	22.0/.87	31.0/1.22	9.52/.375	120.5/4.74	31.8/1.25	14.3/.56	Point & Flat included
LMI 200-SF-50	22.0/.87	50.0/1.97	9.52/.375	152/5.98	31.8/1.25	14.3/.56	Point & Flat included
LMI 200-SF-54	22.0/.87	54.0/2.13	9.52/.375	156/6.14	31.8/1.25	14.3/.56	Point & Flat included

Dimension units = Metric (mm) / English (in)

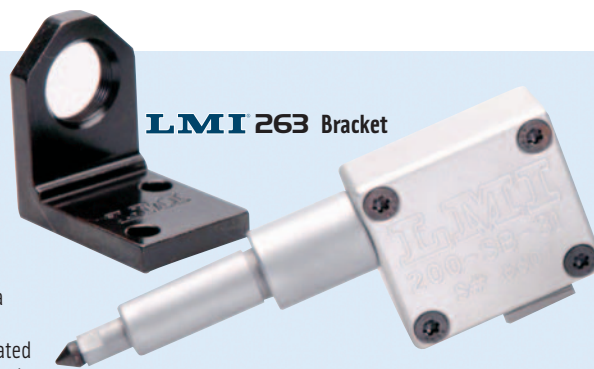
Automotive

Aerospace



Fixture Accessories

LMI manufactures high quality off the shelf fixture accessories in order to simplify fixture design. Each component is manufactured to exact standards to maximize the accuracy and repeatability of the fixture. Standard fixture components such as spring loaded transfer devices minimize design and build time and provide years of reliable hassle free use.



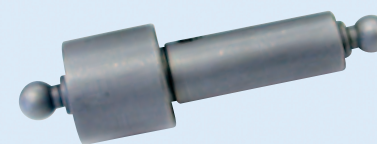
LMI 263 Bracket



LMI 261 Adjustable Bushing



LMI 264 Bracket & 261 Bushing



LMI O45 Tooling Aid



LMI 269 Flush & Trim Check



LMI 267 90° Transfer

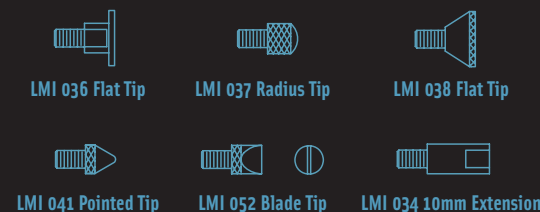


LMI 268 Trim Check



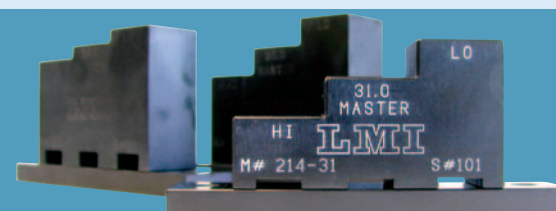
LMI TR400 Series Trigger

Optional Tips



Master Blocks

A master block is required for setting the "zero" or nominal reference position and to electronically calibrate the gauge to the data collector. The LMI 210 Series is used with the 10.0 mm travel probes and the LMI 214 Series is used with the 22.0 mm travel probes. Also specify the nominal (-31, -50 or -54), ex. LMI 210-50 is the master block used in conjunction with the LMI 200-SB-50.



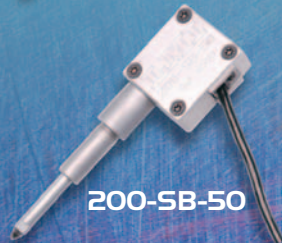
200 SERIES

Miniature Probe
Transducers

LMI



200-SB-31



200-SB-50



200-SF-31



200-SF-50



200-SF-54

Seal Gap measurements using a 200-SB Probe

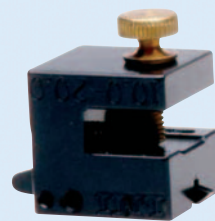
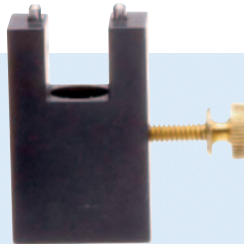
The LMI 200-SB-31 probe can be used in conjunction with the LMI 234 adapter to measure seal gap from the LMI 235 and 236 seal gap gauges. These accessories can be used to replace clay, feeler gauges and calipers when checking door seal and deck lid seal gaps. Simply secure the LMI 235 or 236 to the seal flange and then close the door/deck lid on the pivoting friction lever to its proper position. Open the door and insert the LMI 234 coupled with an LMI 200-SB probe and measure the height of the lever.

A variety of custom sizes, designs and magnetic attachments are available. See LMI's complete line of spring loaded seal gap gauges in the Portable Seal Gap system brochure.

LMI

234 Probe Adapter

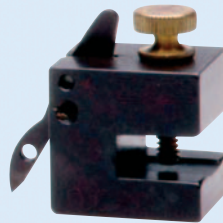
- ▶ Attaches to the probe to obtain readings from door seal (235) or the deck lid (236) gap check gauge



LMI

235 Door Seal Gap Gauge

- ▶ This instrument checks the gap between the door flange and the door itself



LMI

236 Deck Lid Gap Gauge

- ▶ This instrument checks the gap between the deck lid flange and the deck lid



LMI 200-SB Miniature Probe Transducer w/234 Probe Adapter & 235 Door Seal Gap Gauge

Specialty Applications



Flush Adapter & Kick-Up Measurement



Spot Weld Indentation or Rivet Head Measurement



Gap Gauge Adapter

LMI

Linear Measurement Instruments, Corp.

101 N. Alloy Drive, Fenton, MI 48430
 Phone: 810.714.5811 Fax: 810.714.5711
 Email: sales@lmicorporation.com
 Visit our website: www.lmicorporation.com